

# Entrances

ON TIME. ON SPEC. ON COST.



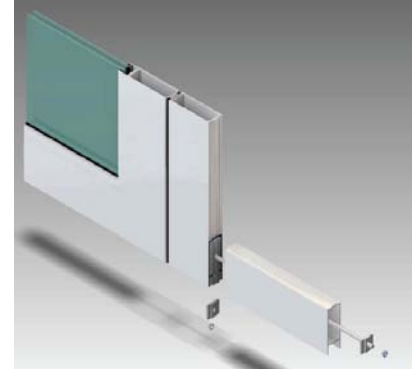
## Lifetime Corner Warranty

### Inter-Locking Stile & Rail

- Structural
- Aesthetics
- Performance

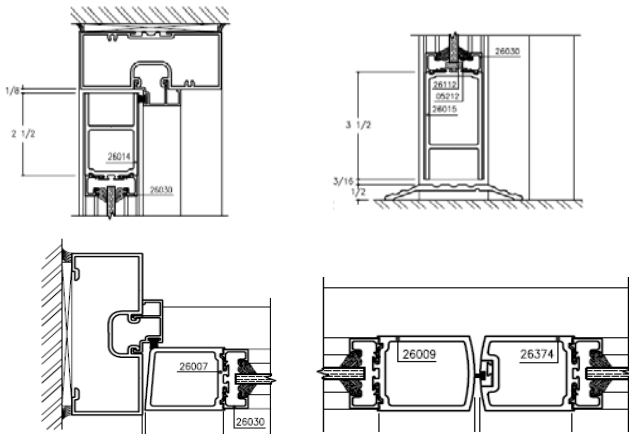
### Tie-Rod Construction

- Strong
- Durable
- Adaptable

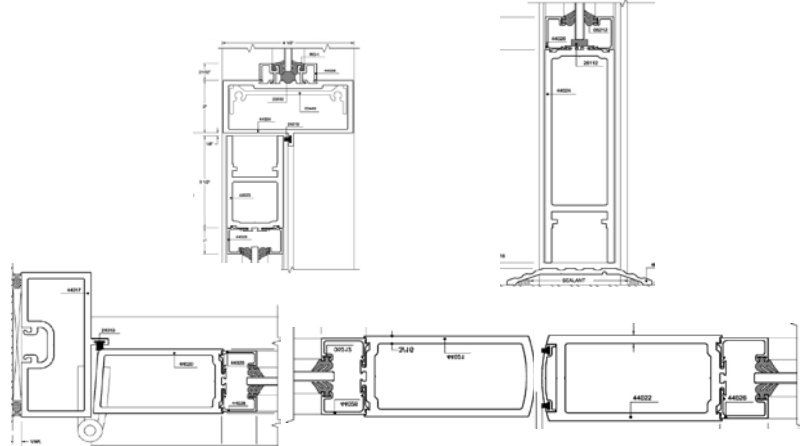


Trulite is proud to offer a comprehensive line of entrance doors designed and tested to meet any project requirement. Each door is constructed with an innovative inter-locking rail and vertical stile ensuring the structural integrity of the door while providing simple shop modifications. Top & Bottom rails "nest" into the vertical stiles providing additional strength and eliminating unsightly raw edges and daylight from showing through at the corners.

### Standard Entrances



### Heavy Duty Entrances



Entrance Door Types	Door Thickness	Vertical Stile	Top Rail	Bottom Rail	Recommended Limits		Traffic Recommendation
					Single	Pair	
Series 200 Narrow Stile	1 3/4"	1 15/16"	2 1/2"	3 1/2"	42" x 96"	84" x 96"	Normal
Series 300 Medium Stile	1 3/4"	3 11/16"	3 1/2"	6 1/2"	42" x 108"	84" x 108"	Heavy to Abusive
Series 500 Wide Stile	1 3/4"	5"	5"	6 1/2"	42" x 108"	84" x 108"	Abusive
Magnum	2"	3 11/16"	3 1/2"	6 1/2"	42" x 108"	84" x 108"	Abusive
Varsity	2"	5"	5"	6 1/2"	42" x 108"	84" x 108"	Abusive

10" Bottom Rails may be substituted on the Non-Impact rated entrances listed above

Trulite Glass & Aluminum Solutions is proud to be your True Single-Source Supplier of all your needs from Specification Sections: 08400, 08700, 08800, and 08900. Complete System Details are Available on [www.Trulite.com](http://www.Trulite.com)